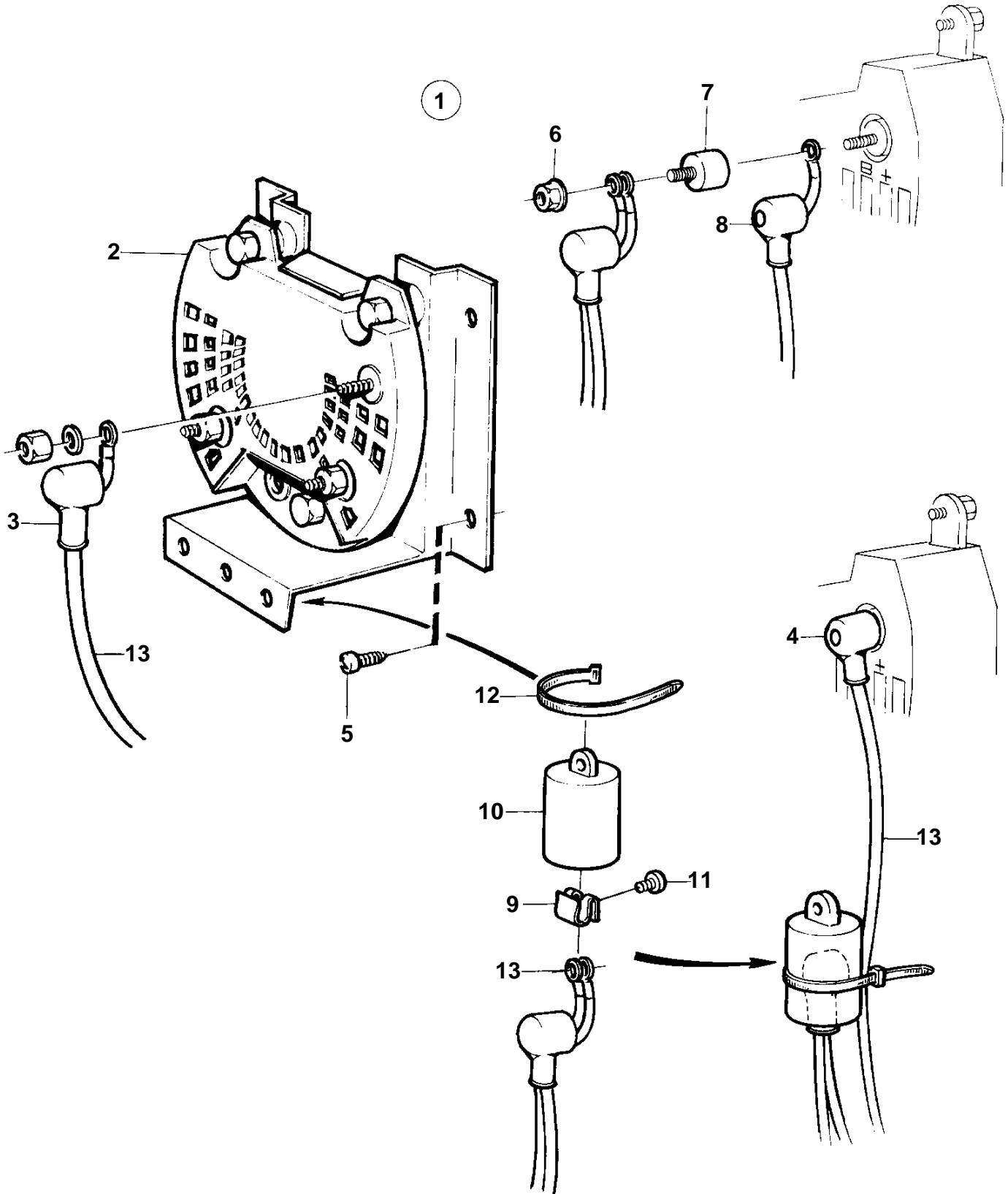


COMMON



COMMON

REF	PART NO.	QTY	DESCRIPTION	SEE SEC.	NOTES
1	858841	1	Charge distributor		REPLACED BY 859499
	859499	1	Charge distributor		REPLACED BY 873120
	873120	1	Charge distributor	258	
			Bulletin 52-07	52-07-EN	Charging Distributor
			Bulletin 52-11	52-11-EN	Charging Distributor
2		1	• Charge distributor		
3	842150	3	• Protective cap		
4	842150	1	• Protective cap		
5	828647	4	• Screw		
6	945407	2	• Flange nut		
7	862330	1	• Rubber bushing		
8		1	• Protective cap		
9	859492	1	• Spring nut		
10	859493	1	• Protecting casing		
11	955126	1	• Screw		
12	948211	X	• Strip clamp		
13		X	Electrical materials	125	
		X	Cables and terminals	124	